



**Note: Annual White Elephant Auction, November meeting. Bring items!**

# TRI-CITIES CHAPTER 1192 NARFE NEWS

National Active and Retired Federal Employees Association  
"Advocates for Current and Former Federal Employees"

NARFE: [www.narfe.org](http://www.narfe.org) Washington Federation: [www.narfewa.net](http://www.narfewa.net) Tri-Cities: [www.narfe1192.org](http://www.narfe1192.org)

**November – December, Volume 2013, Issue 6**

## 2013 Chapter 1192 Officers & Board Members

President, Don Binder	509.585.1393
1 <sup>st</sup> Vice President, Lorie Bennett	509.531.2745
2 <sup>nd</sup> Vice President, Larry Williams	509.783.8554
Secretary, Mary Alice Binder	509.585.1393
Treasurer, Nancy Crosby	509.735.3288
Alzheimer's, Bill Darke	509.375.7757
Hospitality, Carl Gallion	509.539.9179
Legislative, Don & Mary Alice Binder	509.585.1393
Membership, Johanna Caylor	509.375.0739
Newsletter, Mary Alice Binder	509.588.1393
NARFE-PAC, Frank Griffin	509.492.4304
Parliamentarian, Mable Rutt	509.943.1812
Public Relations, Mary Alice Binder	509.585.1393
Service Center, Lorie Bennett	509.531.2745
Webmaster, Larry Williams	509.783.8554

Chapter Email: [narfe1192@gmail.com](mailto:narfe1192@gmail.com)

## CHAPTER MEETINGS/EVENTS

**Meetings:** 1<sup>st</sup> Wednesdays, except July/August  
11:30 a.m., Kennewick Red Lion, Ballroom D  
Lunch: \$14; reservations REQUIRED

**(Vegetarian plates available, if ordered ahead)**

Note: Executive Board meeting days/times vary

**November 6** – Chapter meeting: officer elections!

Program: White Elephant Auction for NARFE  
Alzheimer's Research Fund – **bring items!!**

**Menu: Glazed London Broil**

**December 4** – Chapter meeting: Officers sworn in!

Program: Director Karen McGinnis, HAMMER  
facility, will provide a mission overview

**Menu: Traditional Turkey Dinner**

## SEPTEMBER TREASURER'S REPORT\*

Balance forward, August 31	\$4,725.62
September income	\$ 529.80
September expenditures	\$ 535.00
Dedicated funds	\$ 904.75
Balance on hand, September 30	\$3,815.67

(\*Full reports are posted monthly on the Chapter web site.)

## SERVICE OFFICE

Open Tuesdays, 9:30 – 11:30 a.m.  
Federal Bldg., Richland, Room 137

Phone: 509.373.9536

**Coordinator: 1<sup>st</sup> VP Lorie Bennett**

## **REMINDERS!**

**Service Office** – We're **still** open for business! **Still** haven't made that 2013 visit? You **still** have time! Just one visit to our Service Office during the year? We believe a visit will help members better understand what this chapter resource has to offer; and, maybe you have a suggestion or two regarding how we can improve our Service Office. The weather is **still** good, so consider a visit!



## **Hanford History Partnership –**

Over the past 10 years, many oral Hanford stories have been collected by several Tri-Cities organizations. These invaluable testimonies, photos and memories of the Hanford story – from settlement of the communities and farms of White Bluffs and Hanford, to the 1943 eviction notices, to World War II and the Cold War – are largely untold. There are many more still that need to be captured and preserved before they are lost forever. More at: <http://ourhanfordhistory.org>.



## **Caller Coordinator – Pam Griffin**

Help, please! If you receive a message from a caller, please return the call. For example, each month callers are trying to get accurate meeting/luncheon counts.

Thanks! [Ph: 509.492.4304; email: [pgriff1@earthlink.net](mailto:pgriff1@earthlink.net)]



**THANK YOU FOR THE CALL!**

## **Hospitality Chairman – Carl Gallion**

I'm working on our 2014 meeting menus. Have menu suggestions? Let me know soon. Thank you!

**UPDATE! 2014 Cost- of-Living Adjustment = 1.5%, effective January 1.**

## Chapter President – Don Binder

**Membership** – a key component of any organization. Thus, I ask each of you to look around. Do you have a co-worker, neighbor, friend and/or relative who works for the federal government or is a retiree, spouse or survivor of one? If so, are they a NARFE member? If not, have you spoken to them about joining? If not, please consider doing so.

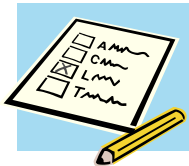


If you need “recruiting” information, go no further than the latest *narfe* magazine. On the page with the NARFE president’s article, the NARFE mission statement is always shown. You can also get information elsewhere throughout the magazine or on the NARFE web site, [www.narfe.org](http://www.narfe.org).

**Why recruit?** Numbers matter! We need to grow our membership, especially those younger than we so there is a viable organization left when we pass on, just as those who came before us assured our viability by recruiting us to join. So, make it a goal – speak to a number of potential members and get at least one, even your spouse, to join. If you need additional information, contact Johanna Caylor, our membership chair, or any executive committee member.

Looking back and ahead even though a compromise was reached between the president and House 3704 Republicans and the government has re-opened, more challenging times are ahead. I believe we all have an obligation to let our elected officials know how we feel. We need to let Doc, Marie and Patty know how we feel.

**A reminder** – election of the seven chapter officers will take place at our November meeting. Yes, seven. With the chapter’s revised bylaws, we have added two “director” positions. So rather than just the five elected officers we have had in the past, two additional members will be joining the executive board. Come to the meeting, **VOTE**, then enjoy our annual **“White Elephant Auction”** for NARFE Alzheimer’s Research Fund!



**Bring items for the auction!**

## 1st VP/Special Programs – Lorie Bennett

With a **new year** approaching, I am looking for **new ideas** for activities chapter members can do together. Museum tours? A boat trip to the Reach? Suggestions welcome! Please contact me.



## District V Vice President – Nancy Crosby

With the passing of Washington State Federation (WSFC) President Sandy Cagle in July, WSFC Vice President Rich Wilson assumed the office of president. At the WSFC executive board’s September meeting, our Chapter 1192 President Don Binder was elected as the interim vice president. Congratulations to Don! He will continue to wear his WSFC NARFE PAC chairman hat as well as all he does for our Chapter 1192.

I visited all three District V chapters – Tri-Cities, Walla Walla and Yakima – in September and encouraged them to continue their recruiting efforts. All are planning fundraising events for Alzheimer’s research. Chapters will also be electing new officers for 2014. I encourage members to step up, support your leadership and help on committees, as needed. **That is the secret to a vital organization.**

Starting in January, watch for more information and registration forms for the 2014 WSFC Convention in Silverdale, Wash., May 13-15.

**Mark your Calendars!**  
**2014 WSFC Convention, May 14-15**

**Silverdale Beach Hotel**  
Silverdale, Wash.

Details in January on  
the WSFC web site:  
[www.narfewa.net](http://www.narfewa.net)



District V is moving forward on pre-planning for the WSFC 2016 convention. Yes, 2016! Tentative dates are May 14-16, 2016.

Finally, we are heading into the Holiday Season ... a time to think of those less fortunate and be thankful for our health and well being. **Happy Holidays!**

## Sunshine News — Mary Binder

**Condolences to:** the family of member Sue Avery; and, to the family of member Rosemary Goodenow.

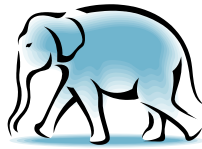
Please continue to let me know about those needing some “sunshine,” or even a card for a special anniversary or significant accomplishment. Call, or email me: [mary\\_binder@msn.com](mailto:mary_binder@msn.com).



**NARFE PROTECT *America's Heartbeat***

## Alzheimer's Research – William Darke

The November chapter meeting program will be our chapter's annual **Alzheimer's Fundraiser** – our **"White Elephant" Auction**; so, look around for some interesting and/or unusual items you would be willing to donate, and we will "auction" them off! AND vice versa, this is also a great opportunity to pick up some unusual items to give to others or to keep for yourself ... and have some fun in the process! All proceeds go to NARFE's Alzheimer's Research Fund.



If you can't come, there is a coupon below to complete and return to me with your check for processing. Note: Put "Chapter 1192" on the information line. I will complete the processing for you. Your contributions are appreciated. Thank you for your support!

## 2nd VP/Webmaster – Larry Williams

President Don talked about recruiting new members.

**So, a reminder:** when talking with "prospects" tell them about our web site, [www.narfe1192.org](http://www.narfe1192.org), as a resource for NARFE information, especially chapter information.



## Legislative – Don and Mary Binder

At all levels, concern continues with the actions of our elected officials, no matter the party, to find 6288 **common ground** on issues impacting all of us. In our lives, there has not been a time when our elected "leaders" have been so disjointed – that is, unable to compromise for the good of all.

U.S. political statistics reflect about 20% are on the HARD right and 20% on the HARD left. That basically means the **minority** has the voice of the two major parties. So, what about the 60% comprising the **middle ground**? Why do we permit the 40% to speak for us? Don't you think it is time we take a hard look at what is best for the country? It will mean compromise from both parties!



## Contacting our Federal Legislators

### The Honorable Richard (Doc) Hastings, U.S. House of Representatives

Phone: 202.225.5816; Fax: 202.225.3251  
<http://hastings.house.gov/ContactForm.aspx>  
 2715 Saint Andrews Loop, Suite D  
 Pasco, WA 99301  
 Phone: 509.543.9396; Fax: 509.546.1972

### The Honorable Patty Murray, U.S. Senate

Phone: 202.224.2621; Fax: 202.224.0514  
<http://murray.senate.gov/email/index.cfm>  
 402 East Yakima Avenue, Suite 390  
 Yakima, WA 98901  
 Phone: 509.453.7462; Fax: 509.453.7731

### The Honorable Maria Cantwell, U.S. Senate

Phone: 202.224.3411; Fax: 202.228.0514  
<http://cantwell.senate.gov/contact/index.dfm>  
 825 Jadwin Avenue, Suites 204/204A  
 Richland, WA 99352  
 Phone: 509.946.8106; Fax: 509.946.6937

If you also believe this, I also believe you have an obligation to let your voice be heard – through a call, email or letter to our two senators and our congressman. Their contact information is above. When you make contacts, please let us know. NARFE tracks member contacts with elected officials 3139.

Finally, the "Chained CPI" and our future FEHBP benefits are **major issues** NARFE is still monitoring. We'll continue to keep you posted. Watch for NARFE GEMS updates and check NARFE's web site, [www.narfe.org](http://www.narfe.org). Feel free to call or email either of us: [don\\_binder@msn.com](mailto:don_binder@msn.com); [mary\\_binder@msn.com](mailto:mary_binder@msn.com).

## NARFE-PAC – Frank Griffin

I am a broken record, so repeating, **yes**, a reality – campaigning is now a never-ending process. **So yes**, requests for PAC dollars are increasing. **So yes again**, NARFE-PAC remains "part of the solution" to making our voices heard! **So yes once more**, your support is needed!



## Support Alzheimer's Research Fund

Enclosed is my NARFE Alzheimer's Research contribution of \$ \_\_\_\_\_  
 Name \_\_\_\_\_, Chapter 1192  
 Address \_\_\_\_\_  
 City \_\_\_\_\_ State \_\_\_\_\_ ZIP \_\_\_\_\_



Your charitable contribution is tax deductible to the extent allowed by law. You will receive a receipt from the Alzheimer's Association for your contribution. Make your check payable to: **"NARFE – Alzheimer's Research."**

Mail to: William Darke, NARFE Chapter 1192 Alzheimer's Chair, 210 Somerset Street, Richland, WA 99354-1964





## Return Service Requested

### NARFE

Washington Federation of Chapters  
Tri-Cities Chapter 1192  
2802 W. 40th Ave.  
Kennewick, WA 99337-2666

### **FEHBP REMINDER!**

**Open Season 2013  
November 11 thru December 9**

*More info at chapter meetings,  
on the chapter web site, and in the  
Chapter 1192 Service Office.*

### **Membership – Johanna Caylor**

**Welcome New Member:** Ford J. Shockman

**Welcome Back:** Bernard L. Ayers; Santos Ortega;  
Ralph W. Russell

**Transferred Out:** Craig A. Groendyke and  
Gerald D. Phillips (#2363/e-chapter)

**Dues Withholding:** Bernard L. Ayers

**Retirees!** Save yourself and NARFE money. Use dues withholding! No renewal notices mailed. You save about \$6/year with automatic monthly annuity deductions. Also, you'll receive a one-time, \$15 rebate from the WSFC/our chapter. Contact me if you need more information and/or the withholding form.

### **ACTIVE FEDERAL EMPLOYEES!**

### **NARFE 6-MONTH FREE MEMBERSHIP CAMPAIGN**

Responding to continued attacks on the federal community, NARFE is offering current federal employees a 6-month free membership for joining.

Application/details at:

<https://www.narfe.org/govshutdown/>

### **NARFE Active Federal Employee Members:** If

you're an AFE "grandfathered" member at the 3 years/\$60 rate, don't lose the chance to maintain your NARFE membership prior to RETIREMENT. Once your renewal comes up as a retiree, you'll pay \$50/year, including the \$10 chapter dues, unless you THEN convert to dues withholding.

***Snowbirds! Before heading to warmer climates for the winter, please let me, or Nancy Crosby, know of any mailing/email address changes! See you in the spring!***

**Dues Change:** Effective October 1, ALL new NARFE members pay a first-year membership of just \$40.

**Hidden numbers:** September/October newsletter numbers belonged to: **Phil Craig; Dolores Rizzo; Eileen Rutledge.** No calls, so no winners! Three new numbers are "hidden" in both the printed and electronic newsletters – the last 4 digits of a member's number. Contact me; win \$5!



### **NARFE 2015 Calendar Photo Contest**

**Photo deadline: February 15, 2014**

**Details at: [www.narfe.org](http://www.narfe.org)**

**Questions: Call 703.838.7760, ext. 268,  
or email: [pubrel@narfe.org](mailto:pubrel@narfe.org)**

**Happy Holidays**



### **Veterans Day 2013 November 11**



*Veterans Day is an annual federal and state holiday in America honoring 24.9 million U.S. military veterans. In 1918, on the 11th hour of the 11th day in the 11th month, the world rejoiced and celebrated because after 4 years of bitter war, the Allied powers signed a cease-fire agreement, an armistice, with Germany at Rethondes, France, on November 11, 1918. This brought WWI to a close. November 11, 1919, was set aside as Armistice Day in the U.S. to remember the sacrifices that men and women made during WWI to ensure a lasting peace.*

*(Source: [www.usafederalholidays.com/veterans\\_day](http://www.usafederalholidays.com/veterans_day))*