



NOTE! White Elephant Auction, November meeting ... bring an item!

TRI-CITIES CHAPTER 1192 NARFE NEWS

National Active and Retired Federal Employees Association
"Advocates for Active and Former Federal Employees"

NARFE: www.narfe.org Washington Federation: www.narfewa.net Tri-Cities: www.narfe1192.org

November – December, Volume 2011, Issue 6

2011 Chapter 1192 Officers & Board Members

President, Don Binder	509.585.1393
1st Vice President, Carl Gallion	509.539.9179
2nd Vice President, Lorie Bennett	509.531.2745
Secretary, Mary Alice Binder	509.585.1393
Treasurer, Nancy Crosby	509.735.3288
Alzheimer's, Bill Darke	509.375.7757
Hospitality, Carl Gallion	509.539.9179
Legislative, Don & Mary Alice Binder	509.585.1393
Membership/Newsletter,	
<i>Johanna Caylor</i>	509.308.6664
NARFE-PAC, Carl Gallion	509.539.9179
Parliamentarian, Mable Rutt	509.943.1812
Public Relations, Mary Alice Binder	509.585.1393
Service Center, Lorie Bennett	509.531.2745
Sunshine, Carolyn Reeploeg	509.375.1229
Webmaster, Larry Williams	509.783.8554
Chapter E-mail: narfe1192@gmail.com	

CHAPTER MEETINGS/EVENTS

Meetings: 1st Wednesdays, except July/August
11:30 a.m., Kennewick Red Lion, Clearwater "C"
Lunch: \$14; reservations requested
(Vegetarian plates available, if ordered ahead)
Note: Executive Board meeting days/times vary

November 2 – Chapter meeting: officer elections
Program: White Elephant Auction
for NARFE's Alzheimer's Research Fund
Please bring auction items!
Menu: Mustard Crusted Pork Loin

December 7 – Chapter meeting: officers installed
Program: Tri-City Tappers/Silk Stockings
Menu: Tillamook Cheddar Chive Chicken

SEPTEMBER TREASURER'S REPORT*

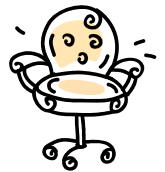
Balance forward, August 30	\$ 6,594.36
September income	\$ 554.18
September expenditures	\$ 685.79
Dedicated funds	\$ 882.68
Balance on hand, September 30	\$ 5,580.07
(*Full reports are on the Chapter web site.)	

SERVICE CENTER

Open Tuesdays, 9:30 – 11:30 a.m.
Federal Bldg., Richland, Room 137
Phone: 509.373.9536

Coordinator: 2nd VP Lorie Bennett

Reminder: your Service Office is now the repository for the Chapter's history – everything from photos to old Chapter newsletters. Stop by and have a look. Speaking of a look, it has been a long time since the Service Office has had a facelift. If you have ideas and/or would like to be involved in this project, please call me – at home or at the Service Office.



Caller Coordinator. To all members – thank you for helping our callers in September as they worked to verify member contact information. And, as always, if you have time to be a caller, have ideas or suggestions for improving this process, or have questions, 6441 please call me, **Pam Griffin, 509.492.4304**, or e-mail: pgriff1@earthlink.net.



LOOKING AHEAD

2012 Planned Chapter Programs
January 4 – The Reach: An Overview
February 1 – Social Security: Benefit Categories
March 7 – Emergency Management
April 4 – Antique Appraisers Terry/Kathy Maurer
May 2 – Hanford: Past, Present and Future
June 6 – Recap of Annual WSFC Convention
Note: Watch for changes and updates in this newsletter and on the Chapter web site.



1st VP/Hospitality Chairman – Carl Gallion
Great news from the Red Lion – **no increase** in our lunch prices for 2012! A sincere thank you to Red Lion Catering Sales Manager Sabrina Greever.

Chapter President – Don Binder

As we enter fall, outside temperatures are rapidly **falling**, but it seems inside temperatures are rapidly **rising**, especially in our Nation's capital. But, more on that in our "Legislative" update.

Looking back, a special thank you to all who helped prepare for and also to those who attended our 40th anniversary celebration at our September meeting. What a special time. It was great to see members we'd not seen for awhile, especially charter member Marie Delsing, and member Helen Speers, whose husband was a charter member. We hope to see them back at future meetings. And, a special thank you to Steve Anderson, our District V vice president, for making the trip from Wenatchee to be part of our celebration. So, between sharing time with members, the spectacular 40th anniversary cake, and all the photos and memorabilia displayed, yes, a truly memorable celebration.

Looking ahead, we would really appreciate seeing many of you at the November meeting. Those members attending will be voting on officers for 2012. Your vote for Chapter officers counts just as much as your vote in the local, county, state and national issues. If you need transportation give me a call, and we'll ensure you make it to the meeting, November 2. **Reminder: bring an item for our White Elephant Auction for NARFE's Alzheimer's Research Fund.** And speaking of voting, remember **November 8!**



2nd VP/Special Programs – Lorie Bennett

Enjoyable, learned something, beautiful day, wow ... just some of the comments from members and their guests who went on the Willamette Star cruise up the Snake River, October 22. So, with that in mind, I'm looking forward to finding more activities we can do together. Ideas welcomed!

District V Vice President – Steve Anderson

First, it was an honor to be part of Chapter 1192's 40th anniversary celebration! Seeing the participation and camaraderie just reinforced for me why your chapter is a model for others. Great work!

Thank you to your members and their guests who attended our Wenatchee chapter's September picnic, and supported our Alzheimer's silent auction. The support helps unite our chapters and district.

Alzheimer's Research – William Darke

We are off to a good start this year – the \$249.95 sent for 0878 Alzheimer's. November is our major fundraising event – the White Elephant Auction. **Please bring items you would like to donate for the auction!** What an opportunity to eliminate things you no longer need or want, but also to do a little holiday shopping, and maybe get that something you can't find elsewhere ... all for a good cause. See you at the auction!



Public Relations – Mary Binder

Is your head spinning with all the requests to write letters, contact our elected officials, or whatever for NARFE's **PROTECT America's Heartbeat** campaign? Need help sorting through all this? Feel free to contact me: 509.585.1393, or at mary_binder@msn.com.

NARFE-PAC – Carl Gallion

PAC – political action committee – what is it, is it important? It is "a committee chartered to administer, disburse and disclose funds contributed voluntarily and used solely for political purposes. NARFE's PAC does that. It is NARFE's "political arm" with a "sole purpose to protect the benefits of individuals with a vested interest in the federal government civilian retirement systems ... NARFE-PAC helps select senators and representatives who are sympathetic to concerns of federal employees and retirees, and support fair and equitable federal retirement programs."



As of September 30, 17 Chapter 1192 members had contributed \$735. That's an average of \$43 per donation, and placed the Chapter first in our district. Now, let's aim for first in our state federation! Please consider a PAC donation. All amounts are welcome!

Sunshine News – Carolyn Reeploeg

Condolences – to John Treadwell (wife passed); Nancy/Gene Schreckhise (Gene's father passed); to the family of former member Margaret F. Lyon.
Get Well — Jack Collins.

I will be your Sunshine Chairman while Marci Lingle is wintering south. Please let me know about members affected by a significant event such as an illness, loss, or an extra-special occasion. Contact me at: jdmcercer@juno.com or 509.375.1229.

2012 Cost- of-Living Adjustment UPDATE!

2012 COLA for CSRS and FERS annuities — CSRS = 3.6% and FERS = 2.6% — payment made 1st business day, January

Webmaster – Larry Williams

As I reported at the October Chapter meeting, statistics show a continued increase in web traffic to our Chapter's web site, and in downloading information. So, the site is being accessed.



Reminder: our web site is a resource with everything from meeting minutes to Chapter newsletters to other NARFE-related links. Take a look!

Legislative – Don and Mary Binder

Yes, things are definitely **heating up** in our Nation's capital, even as they are **cooling down** in other areas with fall and winter approaching. The deficit reduction "super committee's" work continues. Co-chaired by Washington's Senator Patty Murray and Texas Representative Jeb Hensarling, the committee is drawing much attention.

For example, with roughly \$1.2T in special interest breaks and loopholes permeating the U.S. tax code, Senator Murray made clear she expects the panel to include some tax increases along with spending cuts in its final product. Representative Hensarling made clear he was more interested in overhauling the tax code to reduce income tax rates, which he said would help 3056 generate economic growth. The committee has until November 23 to complete its work and make recommendations to Congress. If BOTH bodies do NOT pass the work, automatic "kickers" take effect.

What does this mean for NARFE members? Many proposals and recommendations from the President, Congress and various special interest groups, are proposing significant cuts in pay, health benefits contributions, and reworking COLA for retirees and other annuitants. So, even if you missed the initial deadline for getting the letter to Senator Murray that Jackie O'Ryan from M+R Strategic Services had for signature at our October meeting, the letter is still needed. You can still use the letter recommended through NARFE's **PROTECT America's Heartbeat** campaign. It is on our Chapter's and the Federation's web sites, www.narfe1192.org or www.narfewa.net. Just send the signed letter directly to Senator Murray's Washington State office, or fax it to her Washington D.C. office. (Recommend not mailing the letter to D.C. as it takes about 30 days to work through security screening.)

Remember, our voices MUST be heard, and heard in record numbers, for us to have any impact on the

issues critical to us as the debate within the super committee continues.

Finally, Dan Adcock, NARFE's legislative director, is leaving NARFE after 18 years. He will be the new director, Government Relations and Policy, National Committee to Preserve Social Security and Medicare. As he wrote in his resignation letter, "I wish you every success in moving NARFE forward, and I want to be of assistance to you in my new role ..."

Reminder – November 2 is Call to Congress Day!

Details are on the NARFE web site, www.narfe.org. Can't access the site or have questions? Call us, 509.585.1393, or e-mail us: don_binder@msn.com; mary_binder@msn.com.

Contacting our Federal Legislators

The Honorable Richard (Doc) Hastings, U.S. House of Representatives

Phone: 202.225.5816; Fax: 202.225.3251
<http://hastings.house.gov/ContactForm.aspx>
2715 Saint Andrews Loop, Suite D
Pasco, WA 99301
Phone: 509.543.9396; Fax: 509.546.1972

The Honorable Patty Murray, U.S. Senate

Phone: 202.224.2621; Fax: 202.224.0514
<http://murray.senate.gov/email/index.cfm>
402 East Yakima Avenue, Suite 390
Yakima, WA 98901
Phone: 509.453.7462; Fax: 509.453.7731

The Honorable Maria Cantwell, U.S. Senate

Phone: 202.224.3411; Fax: 202.228.0514
<http://cantwell.senate.gov/contact/index.dfm>
825 Jadwin Avenue, Suites 204/204A
Richland, WA 99352
Phone: 509.946.8106; Fax: 509.946.6937

Thoughts from Afar

Deacon Al Rizzo
(via Dolores Rizzo)



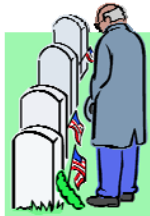
**What's in it for me?
Come and find out.
What's in it for you?
Whatever you put into it.**

**Two of Deacon Rizzo's
favorite questions and answers.**

NARFE
Johanna Caylor
514 Stagecoach Ct
Richland, WA 99354
E-mail: caylorx2@aol.com

Non-Profit Organization
U.S. Postage
PAID
Permit No. 173

Return Service Requested



Veterans Day
November 11
A Time to Remember

Membership – Johanna Caylor

Welcome: James Daly, Donald Farmer, Karl Hedine

Welcome back: Catherine Brekke, Robert Long, Gary White

Transferred out: JJDippel

Renewals: First, THANK YOU to those who are sending in their renewals in a timely manner! It is most helpful and appreciated. Next, NARFE is now e-mailing renewal notices to those who have provided NARFE their e-mail addresses. Watch for details in the *NARFE* magazine and/or updates at our meetings. Have questions? Please call me. Need help with your membership? Please call me.

Remember: The WSFC Federation provides \$10 rebates for: **1-Dues withholding; and, 2-Spouse sign up. (NOTE: Only retirees are eligible for dues withholding. Send no money when applying; only \$3.67 withheld monthly from your annuity. NO more renewal notices!)**

NARFE provides an \$8 rebate for new “AFE” memberships – active federal employees.

Reminder: Please, notify the Chapter and NARFE if you change your mailing, e-mail, or other contact information – this applies to “**Snowbirds**,” too!

Hidden numbers: We goofed. Hidden numbers were missing from the mailed copies, September/October newsletter. So, they are being repeated. Contact me if you find yours; win \$5!

Call/e-mail me: 509.375.0739 or 509.308.6664; or, caylorx2@aol.com.



Always Good to Know

NARFE’s **PROTECT America’s Heartbeat** campaign, www.narfe.org

OPM: 888-767-6738, “Retirement Info Line”

OPM: www.opm.gov/retire/

E-mail questions to: retire@opm.gov

Resource Guide: *Be Prepared for Life’s Events* (available at: www.narfe.org)

NARFE Toll-Free Number: 800-627-3994;

Toll-Free Legislative Hotline: 800-217-8234

Facebook: Log onto Facebook, go to “NARFE National Headquarters,” then “Like”

Switching Gears!
Winter is coming ...
are you and your car
winterized and ready?



Upcoming Dates to Remember:

Daylight Saving Time ends, November 6

Veterans Day, November 11

Thanksgiving, November 24

*Pearl Harbor Remembrance Day,
December 7*

Hanukkah begins, sundown, December 20

Christmas, December 25



Coming
December 7
Chapter 1192
Meeting Program



NARFE 2013 Photo Calendar Contest
Entries accepted until *February 10, 2012*

Entry details at: www.narfe.org. Questions? Call: 703.838.7760, ext. 268, or e-mail: pubrel@narfe.org