



REMINDER! Annual Food Drive, January Chapter Meeting, see Page 1!

TRI-CITIES CHAPTER 1192 NARFE NEWS

National Active and Retired Federal Employees Association
"Advocates for Current and Former Federal Employees"

NARFE: www.narfe.org Washington Federation: www.narfewa.net Tri-Cities: www.narfe1192.org

2017 Chapter 1192 Officers & Board Members

President, Lorie Bennett	509.531.2745
1st Vice President, Pat Turner	509.539.5659
2nd Vice President, Larry Williams	509.783.8554
Secretary, Mary Alice Binder	509.585.1393
Treasurer, Nancy Crosby	509.735.3288
Director-at-Large, Liz Bowers	509.430.1836
Director-at-Large, Steve Howes	509.851.4913
Alzheimer's, Bill Darke	509.375.7757
Legislative, Mary Binder	509.585.1393
Membership, Johanna Caylor	509.375.0739
NARFE-PAC, Steve Howes	509.851.4913
Newsletter, Mary Alice Binder	509.585.1393
Public Relations, Mary Alice Binder	509.585.1393
Service Office, Lorie Bennett	509.531.2745
Webmaster, Larry Williams	509.783.8554

CHAPTER MEETINGS/EVENTS

Meetings: 1st Wednesdays, except July/August

11:30 a.m., Columbia Center Red Lion, Kennewick

Lunch: \$15; reservations REQUIRED

(Vegetarian plates available, if ordered ahead)

Lunch not required to attend the meeting.

Need a ride? Contact President Lorie Bennett.

Note: Executive Board meeting days/times vary.

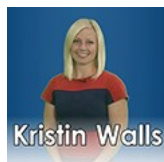
January 4 – Ginger Wireman, Washington State Department of Ecology – presentation on nuclear waste clean up efforts at the Hanford Site.



Food Drive! Please bring nonperishable items and/or cash/check.

Menu: Roasted pork, lentils, seasonal veggies

February 1 – Kristin Walls, chief meteorologist, KVEW TV, will talk about forecasting weather and being a TV weather anchor.



Menu: Sheppard's Pie

NOVEMBER TREASURER'S REPORT*

Balance forward, October 31	\$ 9,476.20
November income	\$ 655.54
November expenditures	\$ 429.63
Dedicated funds thru November 30	\$ 1,862.00
Balance on hand, November 30	\$ 7,840.11

(*Full reports are posted monthly on the Chapter website.)

January – February, Volume 2017, Issue 1

Chapter President – Lorie Bennett

Happy New Year! I hope you had a wonderful holiday season and are as ready as I am for this new year. Looking ahead, I think the word of the year will be "change."



We will have a new president and administration, which will undoubtedly bring changes. Then, too, NARFE has new bylaws that are bringing changes. This means the Washington State Federation of Chapters bylaws need updating as well as our own chapter bylaws. Further, toward the end of the year, we will have chapter elections. With several of our officers being term limited, we will need other chapter members to step up and be willing to serve.

So, yes, change is all around us this year, and we will need our chapter members' support more than ever. Looking back to the 2016 NARFE national convention, those attending the convention learned that NARFE chapters continue to close. Why? Primarily because they don't have members willing to step forward into leadership positions – whether as elected officers or committee chairmen. Further, many are 2 to 3 times larger than our Tri-Cities chapter! **1616**

To date, we have been most fortunate as a chapter to have members willing to serve. Our attendance at chapter meetings exceeds the average of many other chapters. We've received positive feedback on our meeting programs. And, we now have the only remaining service office in the Washington federation. I hope all this can continue for our chapter, but we will need volunteers willing to serve. So, please consider running for an office, serving as a chairman, and/or helping in any other way you can. Also, if you have ideas and/or suggestions for improving our chapter, including our meetings, please let me know.



Yes, looking ahead, a year of changes. Are you ready?

2nd VP/Webmaster – Larry Williams

Couldn't make a chapter meeting and want to read the meeting minutes? Want to see the latest treasurer's report? Lost your chapter newsletter and want to check something? You can find all this information, and more, on the chapter's website, www.narfe192.org. What about making "regularly checking the chapter website" a New Year's resolution?



Director at Large – Steve Howes

Several meetings ago and in a previous newsletter, I solicited member input regarding things we might do to improve attendance at chapter meetings and increase current federal employees' involvement. Some options were mentioned, and I provided my email address so those interested could provide me thoughts and suggestions. As I write this, I have received no written or verbal feedback. This suggests to me that most of you are satisfied with current chapter operations. However, I believe this is an important topic we should continue to consider. So, if you have any thoughts or suggestions, please do not hesitate to contact me, or any executive board member.



In less than a year, as President Lorie wrote in her article, Chapter 192 members will be selecting new officers. Now is the time to start thinking about serving in a chapter officer or committee chair position. Our chapter's success depends on efforts from all of us – not just a few. All of us have varied backgrounds and unique skill sets, and can contribute in many ways. If you are interested in serving in any of these positions and/or learning more about them, please contact the incumbent.



WSFC President – Nancy Crosby

The Washington State Federation of Chapters Executive/Advisory Board held its quarterly meeting December 8 in Tacoma. Region IX Vice President Rich Wilson installed new WSFC officers: Nancy Crosby, president; Karol Kusunose, vice president; and, Mary Binder, District V vice president. He also gave a report on the November NARFE National Executive Board meeting. That report has now been forwarded to federation chapter presidents for sharing with their members. **4272**

A federation board meeting focus was the NARFE

2017 Legislative Training Conference, March 12-15, Washington, D.C. To date, 12 WSFC members, including 3 from the Tri-Cities chapter and one from the Walla Walla chapter, have signed up. They will receive a \$250 federation scholarship to help offset expenses. This is an important conference as both current and retired federal employees may be impacted by the new administration; so, we need to be vigilant in protecting our earned benefits. With members from the Tri-Cities and Walla Walla chapters attending, Congressional Districts 4 and 5 will be represented when members go to Capitol Hill to meet with our legislators and/or their staffs.



To assist members in staying informed, I'm encouraging checking out the webinars NARFE has on its website. There is a lot of good information for members, as well as nonmembers.



The board approved the 2017 WSFC budget with emphasis on providing chapters funds to assist in training and recruitment. The effect of the new "national" membership designation and transfer of 10% dues funds from the former eNARFE members residing in Washington State ZIP codes will be determined in future budgets and per capita tax needs.

The board will be reviewing and updating the federation's bylaws and standing rules to conform to the new NARFE bylaws. Chapters will also need to review their bylaws and make any needed updates.

Finally, I want to wish you all a happy, healthy and prosperous New Year.

WSFC District V VP – Mary Binder

As the new district VP, I am in a learning mode! With the Tri-Cities chapter being my home chapter, an initial focus for me will be visiting and getting to know the district's other 2 chapters, Walla Walla and Yakima.

Looking ahead, mark your calendars for the Region IX Training Conference, June 9-10, Three Rivers Convention Center, Kennewick. Such training conferences are targeted for the year between our federation's conventions. As this conference will be in our district and should be a primary focus, I am not planning a separate district workshop this year. Hope you can attend the regional training!

Legislative – Mary Binder

New year, new administration, new Congress ... as President Lorie wrote, a year of “change.” With this in mind, Director at Large and NARFE-PAC Chairman Steve Howes recently wrote, “I want to encourage all members to stay informed and vigilant when it comes to what is happening in Congress as it pertains to our earned rights and benefits. Read the papers and watch the news. If you see or hear things that concern you, make your opinions known. Supporting NARFE and its efforts is one way to do that; however, some individual effort is also required.” I agree! Please let me know if you have questions, need information, etc.



CONGRESS

NARFE-PAC – Steve Howes

As we begin a new year, I believe it is important to reflect upon NARFE’s mission statement and the importance of NARFE-PAC in achieving the objectives stated therein. I understand the holiday season and starting a new year can bring added expenses and money can be tight, especially for retirees. However, with a new administration taking office in January, no one knows for sure what threats may occur to things important to us, such as our pensions, Social Security, Medicare, and health insurance. Your continued support to PAC will be critical if we wish to protect these benefits.



Perhaps a quick review of some of NARFE-PAC’s successes during the past 2-year congressional cycle, 2015/2016, will help emphasize the importance of your support.

Remember, NARFE is political but non-partisan, so considers providing financial backing to candidates requesting PAC support and who support issues important to federal retirees and active employees regardless of their party affiliation. During the past congressional cycle, NARFE’s Legislative Department reported that \$677,000 in NARFE-PAC funds was disbursed to 216 congressional candidates. Of those candidates, 192 won and 17 lost (2 races were still undecided at this writing; one candidate retired; one died; one dropped out; and, 2 decided to run for other offices). NARFE-PAC also contributed \$140,000 to the Republican and Democratic campaign committees in both the House and Senate. In total, \$817,000 in NARFE-PAC funds was disbursed – nearly 85% more than the previous congressional cycle. **6239**



Contacting our Federal Legislators

The Honorable Dan Newhouse, 4th Congressional Dist. U.S. House of Representatives

Phone: 202.225.5816; Fax: 202.225.3251

<https://www.newhouse.house.gov>

3100 George Washington Way #135, Richland, WA 99354
Phone: 509.713.7374; Fax: 509.713.7377

The Honorable Patty Murray, U.S. Senate

Phone: 202.224.2621; Fax: 202.224.0514

<http://www.murray.senate.gov/email/index.cfm>

402 East Yakima Ave., Suite 390, Yakima, WA 98901
Phone: 509.453.7462; Fax: 509.453.7731

The Honorable Maria Cantwell, U.S. Senate

Phone: 202.224.3411; Fax: 202.228.0514

<http://www.cantwell.senate.gov/contact/index.dfm>

825 Jadwin Ave., Stes 204/204A, Richland, WA 99352
Phone: 509.946.8106; Fax: 509.946.6937

For Washington State, \$27,500 went to 6 candidates during the primary and general elections. Senator Patty Murray and Congressman Derek Kilmer (D6) each received \$10,000, the NARFE-PAC maximum. Others receiving contributions were: Representatives Rick Larsen (D1); Suzan DelBene (D2); Dave Reichert (D8); Adam Smith (D9); and, Denny Heck (D10).



As of September 30, 50 Chapter 1192 members had contributed \$3,752 to PAC, ranking the chapter 5th in the Washington State Federation of Chapters. At 6 chapter sustainers, however, the chapter ranks first! The average chapter member donor contributed \$75. The final figures for the 2015/2016 congressional cycle, which will include October, November and December contributions, will be available sometime in January.

Finally, besides the importance of providing NARFE-PAC funds, NARFE emphasizes building and strengthening relationships between NARFE and congressional candidates through activities such as attending fundraisers and having face-to-face contacts. These relationships will be essential to achieving legislative success and defeating proposals contrary to our interests in the new Congress.

Membership – Johanna Caylor

The final 2016 NARFE membership figures have not yet been released, but as of December 11, Washington State ranked 9th among the 50 states for new members in 2016 and 14th in reinstatements. Further, NARFE President Richard Thissen wrote in releasing the latest figures, “Thru November, we have had a great year and I expect that year’s end there will be more positive news.”

How the membership changes approved at the NARFE national convention will impact our chapter is to be determined. Stay tuned! Please ask if you have questions.



Return Service Requested

NARFE

Washington Federation of Chapters
Tri-Cities Chapter 1192
2802 W. 40th Ave.
Kennewick, WA 99337-2666

Alzheimer's Research – William Darke

November was Alzheimer's month and the chapter's fundraising was very successful – \$1,912.00 from the "white elephant" auction and other donations at the November chapter meeting; and, \$151.38 from the coat check members staffed at the annual Tri-Cities Wine Festival. With these totals, the chapter has sent \$2,163.38 to the federation Alzheimer's chairman for the funding year that started May 1.



Thank you to Pam Griffin and Jim Partridge for their assistance with the auction; and, to Nancy Crosby and her team of volunteers at the coat check. Raising the funds we have, to date, has been a real team effort, and we can be proud of our successes. We are on our way to another great fundraising year, and to helping NARFE achieve its new \$13M goal for its Alzheimer's Research Fund by the end of 2018!

Caller Coordinator – Pam Griffin

"Snowbirding" season is here! Please remember to keep the chapter updated with address and/or phone number changes. This helps our callers, and helps with mailings such as the newsletter. Thank you! My contact information is: **Ph: 509.492.4304;** **email: pgriff.fisher1@gmail.com.**



Sunshine News – Mary Binder

Condolences to Member Jim Stover who lost his wife, Edna.

Thinking of You Wishes to Lorie Bennett; Nancy Carr.

Reminder: Know someone needing a little "sunshine" or a special-occasion card? Call me, or email me at: **mary_binder@msn.com.**



Service Office – open Tuesdays, 9:30 – 11:30 a.m., Federal Bldg., Room 137, Richland. Phone: 509.373.9536. Visitors welcome! New year, new opportunity to visit the office. Remember, our chapter has the only remaining service office in the Washington State Federation!

REMINDERS!

Hidden Numbers: November/December newsletter numbers belonged to: James Kautzky; Eugene Pride; Darleen Wall. Sorry, no takers! Find 3 new numbers in this newsletter – **last 4 digits of your NARFE membership number**. Find it, call me, 509.375.0739, email me, caylorx2@aol.com, or let me know at a meeting, and you, too, can win \$5!



2016 NARFE Photo Contest
August 1, 2016 – April 15, 2017
Theme: The American Dream
Details at "Special Programs,"
www.narfe.org

Meeting Programs – The chapter's board of directors is always looking for member input for meeting programs. Contact Secretary Mary Binder if you have a suggestion, 509.585.1393.

OPM Password – Ensure you access the OPM site at least every few months to keep your password current.

NARFE F-100, Be Prepared for Life's Events – Do you have this completed and/or is it current?



Winter is Here!
Enjoy the Beauty!
Be Safe ... Walking & Driving!

PROTECT America's Heartbeat Toolkit!
Updated/Expanded! Go to: www.narfe.org.